

A NEW REVOLUTION IN DICTIONARY MANAGEMENT

Dictionaries exist for almost every application that you support. Too often the data remains unsynchronized between rings or platforms. This is typically due to lack of time and resources to perform the data entry required to keep TEST and LIVE dictionaries synchronized. To assist healthcare organizations with their dictionary management needs Summit Healthcare offers Summit InSync.

Summit InSync is a manageable data extraction, analysis, and update application that can be applied across an entire hospital enterprise. It is the industry's sought after tool to guide users through the step-by-step process of dictionary management. Use cases include:

- Routine synchronization
- Advanced clinical implementations
- EHR migration

PRODUCT DETAILS

Benefits

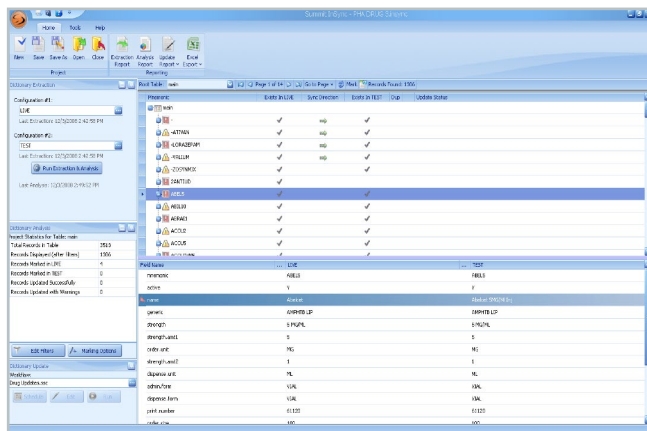
- **Immediate ROI** - Demonstrate instantaneous cost savings and workload reduction.
- **Unmatched data analysis** - Provides customizable field-level filtering to single out desired record sets.
- **Enhanced time efficiency** - Automates dictionary synchronization using preconfigured preference settings.
- **Simplified EHR migration** - Administers clean and accurate data in all dictionaries throughout migration process.
- **Prepare for Advanced Clinical Implementations** - Allows for data building during your phased clinical implementations like eMAR/BMV, CPOE, ORM.

Features

- **E-Wizard application** - A user-friendly tool that serves as a point-and-click guide through the dictionary extraction and selection process with automated import into a sync project.
- **Color-coded analysis screen** - Provides robust filtering and flagging methods for updating.
- **Intuitive "tree list" control** - Displays dependant and related data from even the most complex dictionaries.
- **Handles any EHR platform** - Also, supports multiple facility setup.
- **Powerful discrepancy reports** - Analyzes trends as data changes over time.

SUMMIT INSYNC

SUMMIT INSYNC DASHBOARD



Summit InSync has revolutionized the way organizations approach dictionary management and synchronization. Stop the NPR reports, excel spreadsheets and headaches.

SUMMIT HEALTHCARE PRODUCT SUITE



Summit Express Connect

A comprehensive interface engine that provides dashboard monitoring & alerting. Seamlessly integrate your EHR with other vendor systems.



Summit Provider Exchange

An enhanced bi-directional physician office integration solution, which simplifies patient registration, inbound orders and outbound results between your hospital EHR and ambulatory systems.



Summit Care Exchange

Streamline and support your transition of care meaningful use objective by supporting your CCD data exchange. Provides better support, and more informed clinical decision making.



Summit Scripting Toolkit

A workflow and task automation tool that can also be used when HL7 methods to deliver data are not an option. Has the ability to handle everything from the simplest script to the most complex interface.



Summit InSync

The market leading solution for dictionary/table management through extraction, analysis and synchronization. Keep your data accurate between test and live, across multiple platforms and domains.



Summit Downtime Reporting System

Be prepared for any hospital EHR, Ancillary system or Network downtime with a cost effective, simple, yet robust technology. Ensure your staff has access to critical patient data 24/7.

PRODUCT REQUIREMENTS

Operating System	Microsoft Windows version: 7, 8, Server 2008, or Server 2012
Minimum Memory	4 GB RAM
Minimum Hard Disk Space	150 MB for base installation plus an additional 100 GB for log files
Minimum System Processor	2 gigahertz (GHz) or faster 32-bit (x86) or 64-bit (x64) processor
Required Software	.NET 4 Framework or higher, Microsoft SQL Server 2008 or above, any PDF viewer
Minimum Resolution	1024x768

www.summit-healthcare.com

35 Braintree Hill Park, Suite 303, Braintree, MA 02184

Phone: (781) 519-4840

Email: info@summit-healthcare.com